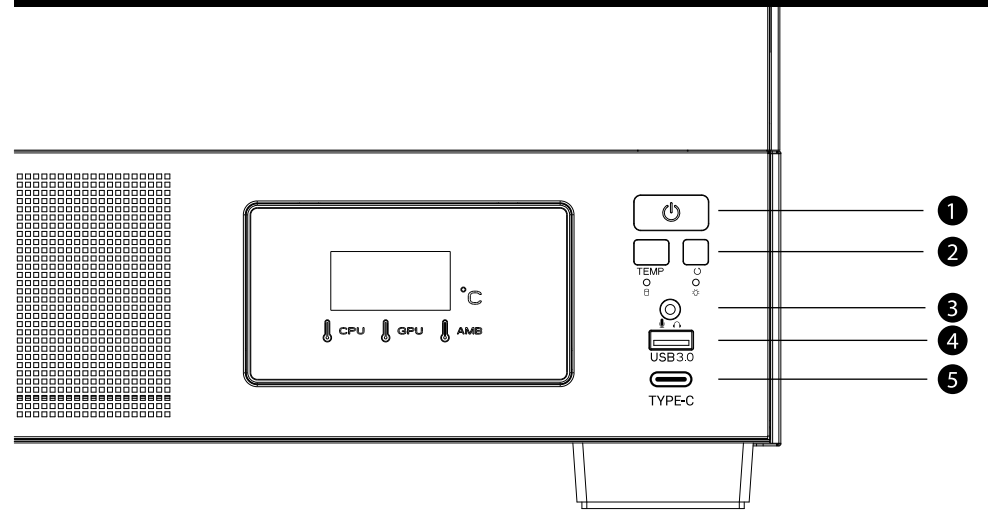


FRONT

I/O PORTS



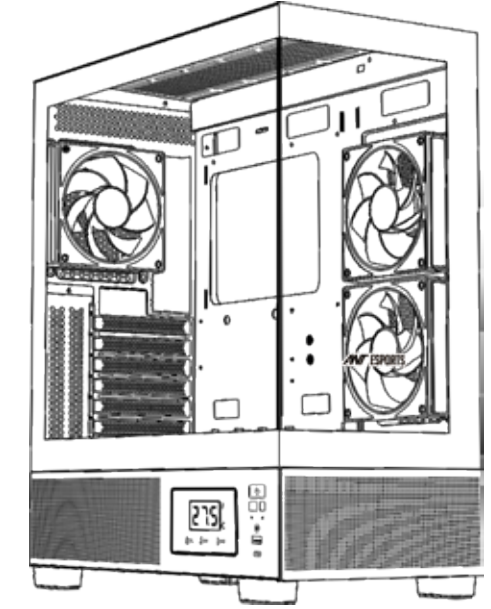
- | | |
|--|----------------------------------|
| <p>1 Power Button</p> <p>2 Screen Control & Reset</p> <p>3 Integrated Audio (Headphone & Microphone)</p> | <p>4 USB 3.0</p> <p>5 TYPE-C</p> |
|--|----------------------------------|

SPECIFICATIONS	Dimensions (L x W x H)	Product Size	450 x 210 x 480 mm
	Motherboard Type	ATX, Micro-ATX, Mini-ITX	Packing Size
Materials	ABS + SPCC + Tempered Glass	Drive Bays	3.5 Inch / 2.5 Inch 2 HDD + 1 SSD
Fan Support	Top 120 mm x 3 Bottom 120 mm x 3 Rear 120 mm x 1 Side 120 mm x 2	Pre-Installed Fans	x 2 ARGB Fans (Side), x 1 ARGB Fan (Rear)
Liquid Cooling Support (Maximum)	Top 120 / 240 / 360 mm Bottom None Rear None Side None	Compatibility (Maximum)	VGA Card Length 390 mm CPU Cooler Height 165 mm
Expansion Slots	7	I/O Panel	1 x Type-C, 1 x USB 3.0, 1 x HD Audio, 1 x Power Button, 1 x Reset Button, 1 x LED Control Button, x 2 LED Indicators

*Product specifications are subject to change without any prior notice.

HALION HPRO 740

USER MANUAL



SCAN FOR

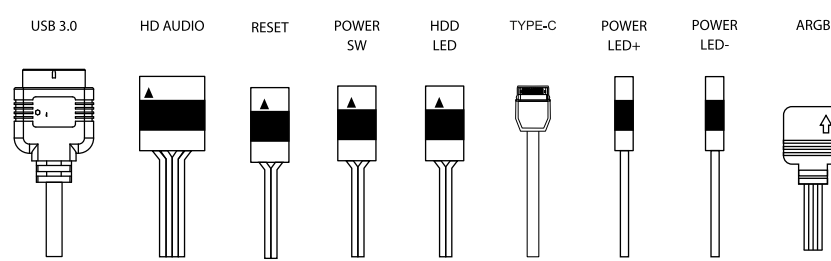


SOFTWARE



BACK

I/O CONNECTORS



English

See your motherboard's manual for front panel header locations and pin-outs.

Español

Consulte en el manual de la placa base las ubicaciones de los cabezales del panel frontal y las salidas de conectores.

Deutsch

Positionen und Pinbelegungen der Stiftleisten an der Frontblende finden Sie in der Motherboard-Anleitung.

Polski

Zapoznaj się z instrukcją do płyty głównej w celu uzyskania informacji o położeniu gniazda panelu przedniego i pinów.

Français

Consultez le manuel de votre carte mère pour les emplacements des embases du panneau avant et les sorties pi.

Svensk

Se bruksanvisningen för moderkortet för huvud och pi-utgångar på framsidan.

Italiano

Vedere il manuale della scheda madre per le posizioni e le piedinature del connettore del pannello anteriore.

Português

Veja o manual da sua placa-mãe para localizar os locais e os compartimentos do painel frontal.

Русский

Схема расположения колодок передней панели и выводов представлена в руководстве к системной плате.

Türk dili

Ön panel bağlantı konumları ve Pi çıkışları için ana kılavuzunuzun kılavuzuna bakın.

日本語

フロントパネルヘッダーの位置と操作はマザーボードマニュアルを参照

한국어

프론트 패널 헤더 위치와 pi 아웃은 마더보드의 매뉴얼을 참조하십시오.

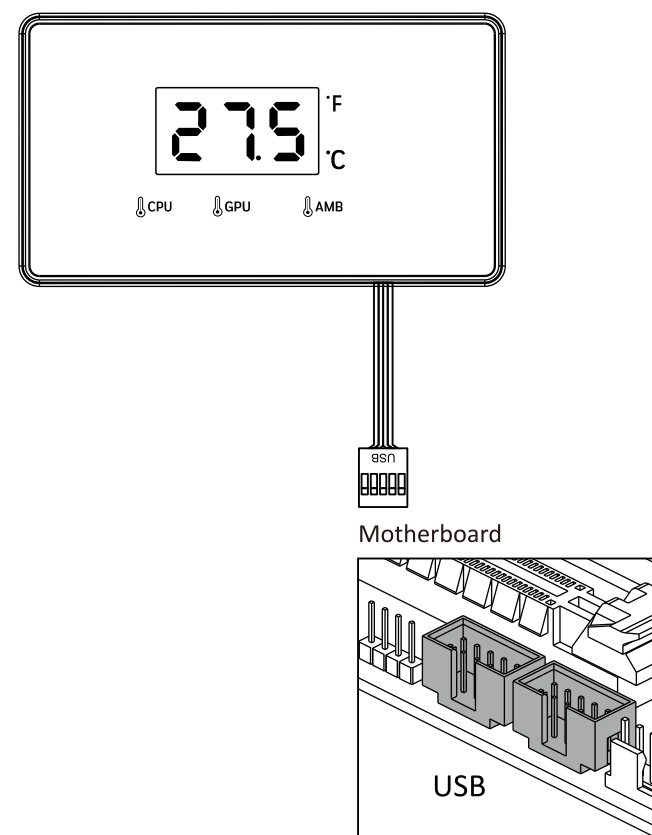
ภาษาไทย

อ่านคู่มือมาเธอร์บอร์ดของคุณเพื่อรับทราบตำแหน่งส่วนหัวแผงด้านหน้าและ Pi-out

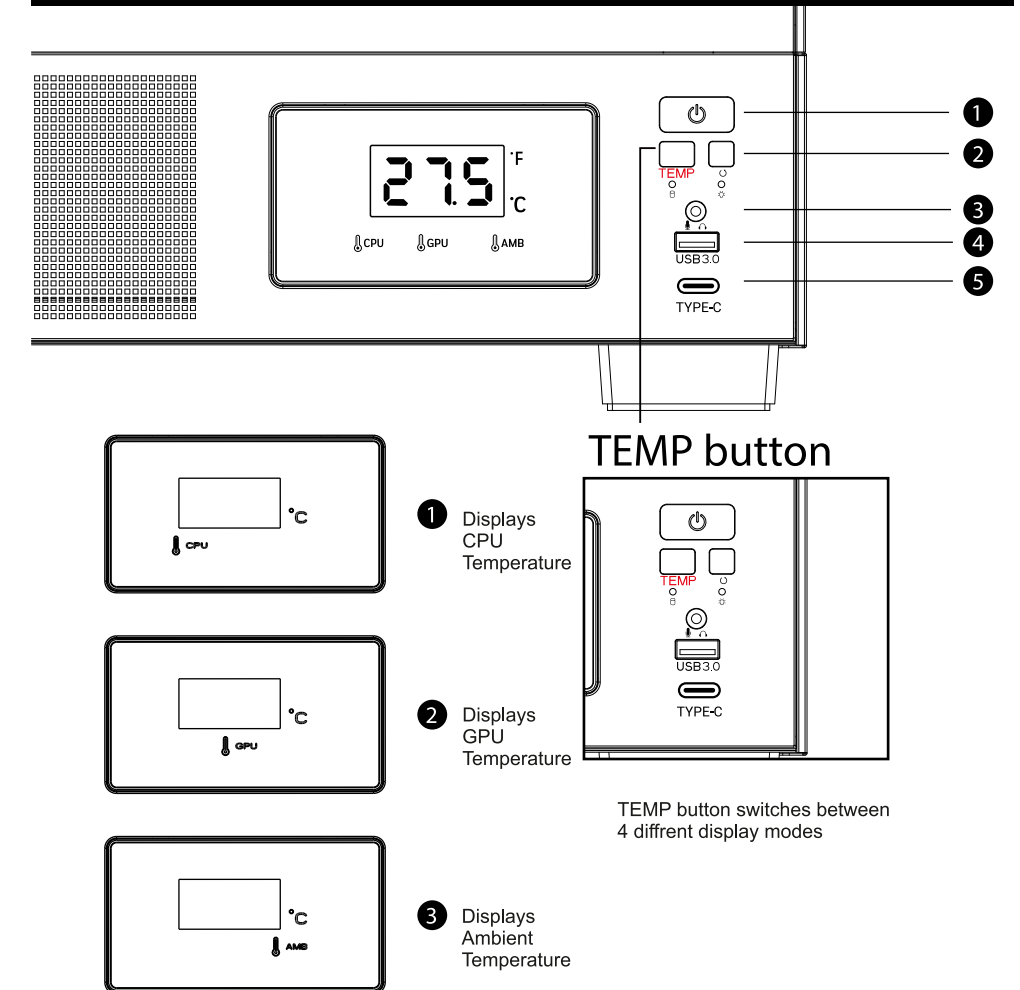
العربية

راجع دليل اللوحة الأم لتحديد مواقع رأس اللوحة والبياس.

DISPLAY CONNECTION



MODE VARIATION AND INSTRUCTION



- 1 Displays CPU Temperature
- 2 Displays GPU Temperature
- 3 Displays Ambient Temperature

TEMP button switches between 4 different display modes